



## Rabbit anti Claudin 7 Polyclonal Antibody

Alternative Name(s): CLDN7; CEPTRL2, CPETRL2, Hs.84359, claudin-7

### Order Information

- **Description:** Claudin 7
- **Catalogue:** 500-10594
- **Lot:** See label
- **Size:** 100ug/200ul
- **Host:** Rabbit
- **Clone:** nan
- **Application:** IHC(P)
- **Reactivity:** Hu, Ms, Rt

### **ANTIGEN PREPARATION**

A synthetic peptide from C-terminus of human claudin 7 protein. This sequence is identical to human, rat, mouse and bovine.

### **BACKGROUND**

The claudin superfamily consists of many structurally related proteins in humans. These proteins, which include claudin 1 through 18, are important structural and functional components of tight junctions in paracellular transport. Claudins are located in both epithelial and endothelial cells in all tight junction-bearing tissues. Claudins, which consist of four trans-membrane domains and two extracellular loops, make up tight junction strands. Claudin 7 (CLDN7) has two isoforms, a full-length form with 211 aa residues and a C-terminal truncated form with 158 aa residues. This protein is localized in the intercellular junctions of the epithelial cells of the proximal tubules of the nephrons in mammalian kidney. It is expressed in normal human and mouse epithelia.

### **PURIFICATION**

The Rabbit IgG is purified by Epitope Affinity Purification

### **FORMULATION**

This affinity purified antibody is supplied in sterile Phosphatebuffered saline (pH7.2) containing antibody stabilizer

### **SPECIFICITY**

This antibody reacts Claudin 7 of human, mouse and rat. The other species are not tested.

### **STORAGE**

The antibodies are stable for 24 months from date of receipt when stored at  $-20^{\circ}\text{C}$  to  $-70^{\circ}\text{C}$ . The antibodies can be stored at  $2^{\circ}\text{C}$ - $8^{\circ}\text{C}$  for three month without detectable loss of activity. Avoid repeated freezing-thawing cycles.

### **APPLICATIONS/SUGGESTED WORKING DILUTIONS\***

- Western Blot: 0.1-1  $\mu\text{g/ml}$
- ELISA: 0.01-0.1  $\mu\text{g/ml}$
- Immunoprecipitation: 2-5  $\mu\text{g/ml}$
- IHC: 0.5-2  $\mu\text{g/ml}$
- Flow cytometry: Not tested
- Molecular Weight: 22.4
- Positive Control: Kidney Tissue
- Cellular Location: Cell Membrane

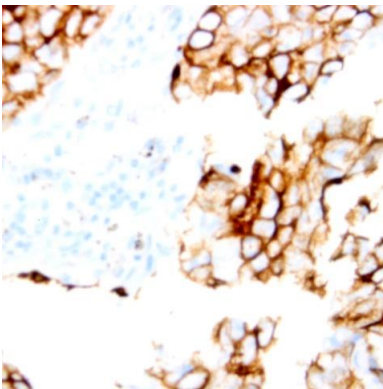
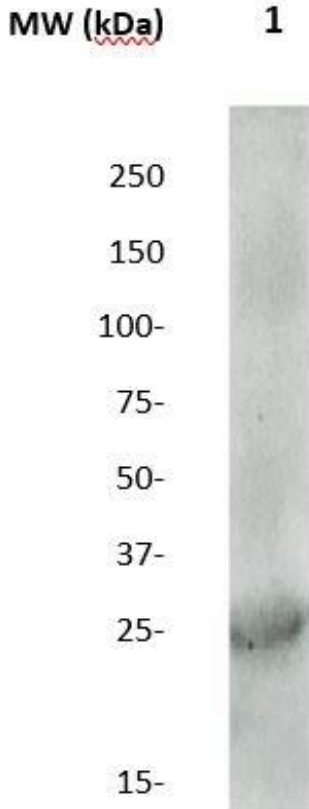
\*Optimal dilutions should be determined by researchers for the specific applications.

### **FOR RESEARCH USE ONLY.**

AbboMax, Inc 2528 Qume Drive, Suite 8, San Jose, California 95131, USA  
1 408-573-1898 (Tel). 1 408-573-1858 (Fax). [www.abbomax.com](http://www.abbomax.com) [info@abbomax.com](mailto:info@abbomax.com)

**DATA ATTACHMENTS**

Western Blot: The whole lysate derived from MCF7 (20 ug/lane) immunoblotted by Rabbit anti – Claudin 7 (Cat# 500-10594) at 1:500. Observed a major immunoreactive band at molecular weight ~23kDa.



Immunohistochemistry: Human Breast carcinoma (FFPE) stained with Rabbit anti-Claudin 7 (Cat# 500-10594) at 1:200 for 10 min @ RT. Staining of formalin-fixed tissue requires boiling tissue sections in 10 mM Citrate Buffer, pH 6.0 for 10 min followed by cooling at RT for 20 min.

**REFERENCES**

**FOR RESEARCH USE ONLY.**